



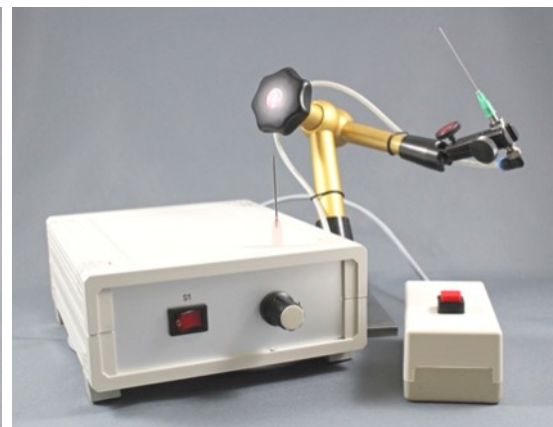
**OptoTech**

# Product Catalogue

Consumables & Spare Parts

Metrology

Precision Optics



Smart Solutions for Professionals



## Preface

---

*Dear customer,*

*As a pioneer for workshop metrology, since it's creation OptoTech has developed a suitable measuring instrument for every manufacturing cell on the shop floor.*

*With today's ever rising standards for fabrication tolerances, the possession of optimized metrology equipment more than ever becomes an essential factor for the economic success of any manufacturer in the optical industry.*

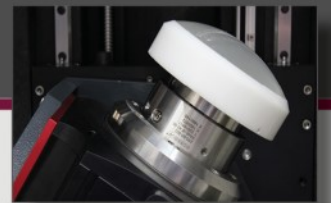
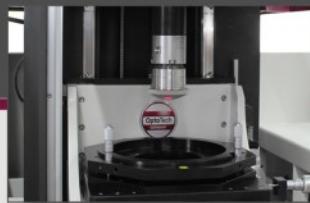
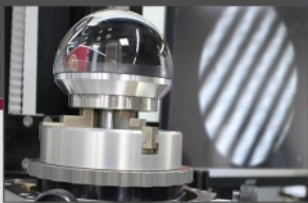
*OptoTech metrology equipment ever since is characterised by precision, reliability and quality. Our focus is and has always been the satisfaction of our customer's needs with the usability of our products as the key attribute. Throughout many years of experience in creating machinery for the optical industry, OptoTech has build up a strong expertise in the field of metrology. We are happy to share this experience with you. Whether you have a need for entire new equipment or want to sustain or update your existing metrology, OptoTech is your strong partner.*

*We offer a wide range of solutions from modern, innovative measuring concepts to services for your present inventory. It's worth mentioning that regular maintenance carried out by our experienced service personnel can help to secure and even improve the reliability and accuracy of your metrology equipment, thus providing a key contribution to the long-time success of your business.*

*On the following pages we'd like to give you a broad overview of our choice of supplies from cementing, through interferometry as far as cleaning accessories for your optical products.*

*Please don't hesitate to contact us! We're more than happy to assist you!*

# The OptoTech Product Portfolio: Metrology for all Optical Applications



OptoTech offers metrology for all measuring tasks in the modern optical production. From the specific requirements for micro optics production up to macro optics, OptoTech provides the adequate measuring equipment for every tasks.

To be able to keep up with market dynamics, we are continuously working on new metrology solutions. Our new and innovative MSI stitching interferometer product line is just one example. Upgrade-solutions for your existing measuring equipment complete our product range in the field of optical measuring technologies.

**Smart Solutions for Professionals**



**OptoTech** Optikmaschinen GmbH  
Sandusweg 2-4  
35435 Wetztenberg / Germany  
Phone: +49 641-98203-0  
Fax: +49 641-98203-900  
Email: [info.de@optotech.net](mailto:info.de@optotech.net)  
Web: [www.optotech.net](http://www.optotech.net)



## Content

---

	Page
<b>Precision Optics: Cementing</b> .....	<b>6</b>
<b>Reference Spheres (AZP)</b> .....	<b>6</b>
<b>Lens Adapter</b> .....	<b>7</b>
<b>Lens Adjustment</b> .....	<b>8</b>
<b>Gluing and Cementing</b> .....	<b>9</b>
<b>Software</b> .....	<b>12</b>
<b>Conversion Kit's and Consumables</b> .....	<b>13</b>
<b>Stand-Alone-Units</b> .....	<b>16</b>
<b>Precision Optics: Metrology</b> .....	<b>18</b>
<b>Reference Spheres (OWI)</b> .....	<b>19</b>
<b>1/2"</b> .....	<b>19</b>
<b>60mm</b> .....	<b>19</b>
<b>4" &amp; 5"</b> .....	<b>20</b>
<b>6"</b> .....	<b>21</b>
<b>Converter, Converger, Diverger</b> .....	<b>22</b>
<b>Adapters</b> .....	<b>23</b>
<b>Extension Tubes</b> .....	<b>23</b>
<b>Absorber Foils</b> .....	<b>24</b>
<b>Reference Optics</b> .....	<b>25</b>
<b>Lens Adapters for Vertical Interferometers</b> .....	<b>26</b>





## Content

---

	Page
<u>Lens Adapters for Horizontal Interferometers .....</u>	<u>29</u>
<u>CGH Holder &amp; Lens Positioning .....</u>	<u>30</u>
<u>Software .....</u>	<u>33</u>
<u>Plano Measurements .....</u>	<u>34</u>
<u>Measuring Gauges and Pins .....</u>	<u>35</u>
<u>Cleaning .....</u>	<u>38</u>
<u>Cleaning Equipment .....</u>	<u>38</u>
<u>Miscellaneous .....</u>	<u>40</u>
<u>Measuring Stand .....</u>	<u>40</u>
<u>Caliper / Fine Measuring Table .....</u>	<u>41</u>

## Reference Spheres AZP



### Standard Set of Reference Spheres for AZP Systems

**Art.No.: 541-80-0020**

Contains reference spheres for the focal distances:  
-35mm, 35mm, 60mm, 120mm, 200mm, 300mm

Dust-free storage in plastic box.

### Expansion Sets of Reference Spheres for AZP Systems

For expanding the measuring range of the OptoTech AZP systems we offer 2 different sets of reference spheres for the following focal distances:

**Art.Nr.: 541-80-0063**

**Convex:** -150mm, -300mm, -400mm, -500mm, -600mm, -800mm, -1000mm, -1200mm, -1400mm, -1600mm, -1800mm, -2000mm

**Art.Nr.: 541-80-0064**

**Concave:** + 300mm, 400mm, 500mm, 600mm, 800mm, 1000mm, 1200mm, 1400mm, 1600mm, 1800mm, 2000mm, 2200mm

Dust-free storage in plastic box.

All reference spheres also available separately



### Set of Extension Tubes for AZP Systems

**Art.No.: 541-80-0027**

Set consisting of 9 tubes for the following extensions:

1mm, 6mm, 8mm, 10mm, 14mm, 18mm, 20mm, 25mm, 30mm

Every extension tube can be combined with the other tubes.

Dust-free storage in plastic box.

## Lens Adapter

### Set of Delrin Chucks (POM)

Series 1: Art.No.: 712-001-0001

Series 2: Art.No.: 712-001-0002

Series 3: Art.No.: 712-001-0003

Series 4: Art.No.: 712-001-0004

Single delrin chucks on request



Series No.	Art.No.	No. of Delrin Chucks	Diameter (mm)
1	712-001-0001	10	2, 3, 4, 5, 6, 7, 8, 9, 10
2	712-001-0002	10	11, 12, 13, 14, 15, 16, 17, 18, 19, 20
3	712-001-0003	9	22, 25, 28, 31, 34, 37, 40, 45, 50
4	712-001-0004	9	55, 60, 65, 70, 75, 80, 85, 90, 95

### Precision centering spindle for AZP 2 HP

Art.No.: 541-16-0008

Hand-operated precision centering spindle (like AZP 1 HP) on AZP 2 HP. Simple mounting via assembly on threaded flange of the vacuum spindle tail of the AZP 2 HP

Consisting of:

Art.No.: 541-16-010      Adaptor  
 Art.No.: 540-90-0015      Precision Spindle

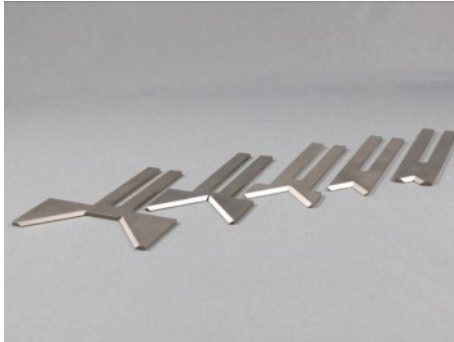
Also seperately available

Various clamping systems (HD or clamping chuck) available:

Art.No.: 540-90-0051      **HD 40 Interface**  
 Art.No.: 540-90-0052      **HD 25 Interface**  
 Art.No.: 540-90-0055      **HD 12 Interface**  
 Art.No.: 540-90-0058      **NANN-Collet Chuck**  
    **Ø < 7 mm**



## Lens Guides



### V-Guides for Lenses

*Art.No.: 540-15-007 For lenses  $3\text{mm} < \varnothing < 10\text{mm}$*

*Art.No.: 540-15-008 For lenses  $8\text{mm} < \varnothing < 23\text{mm}$*

*Art.No.: 540-15-009 For lenses  $20\text{mm} < \varnothing < 40\text{mm}$*

*Art.No.: 540-15-067 For lenses  $20\text{mm} < \varnothing < 56\text{mm}$*

*Art.No.: 540-15-068 For lenses  $50\text{mm} < \varnothing < 84\text{mm}$*

*Art.No.: 540-15-090 For lenses  $85\text{mm} < \varnothing < 110\text{mm}$*



### V-Guides for Rod-Lenses

Hard metal V-guides for lenses

#### **Size chart**

**Art. No. 541-15-...**

$\varnothing$	Height 5 mm	Height 8 mm	Height 12 mm
$1 < \varnothing < 2$	541-15-0005	541-15-0006	541-15-0007
$2 < \varnothing < 4$	541-15-0014	541-15-0015	541-15-0016
$4 < \varnothing < 7$	541-15-0011	541-15-0012	541-15-0013



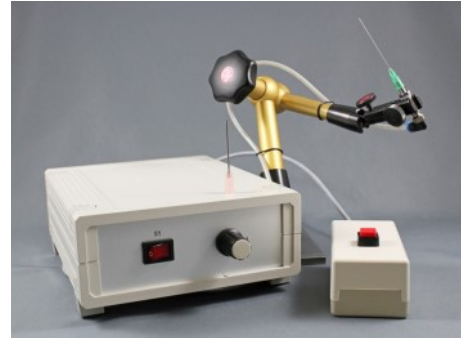
## Lens Adjustment

### Air Pressure Manipulator 110/240V

**Art.No.: 540-25-0011**

Air pressure manipulator for adjusting lenses with a frequency controlled air jet beam including accessories (Push-Button, Controller, adjustable hydraulic arm, air nozzle, etc.)

Frequency: 110-240 V



Also available separately:

**Art.No.: 03070400030080 Manipulator nozzle Ø 0,8 mm**

**Art.No.: 03070400030120 Manipulator nozzle Ø 1,2 mm**

## Gluing & Cementing

### UV-Cement Vitralit & UV-Adhesive Noa 61

OptoTech offers various UV-Adhesives for different bond types and curing processes.

Storage stability: Shelf life 6 Months (at 7°C - 25°C)



Name	Art.No.	Quantity	Bond Type	Curing Process
UV-Cement Vitralit 6128	KK-63-3201	100 ml	Glass-Stainless Steel	UV, thermal, chemical
UV-Cement Vitralit 7256	KK-63-3202	100 ml	Glass-Glass	UV
UV-Cement Vitralit 6401	KK-63-3203	100 ml	Glass-Glass	UV
UV-Cement Vitralit 6127	KK-63-3204	100 ml	Glass-Different Materials	UV, thermal, chemical
UV-Adhesive Noa 61	KK-77-3300	100 ml	Glass-Glass	UV

## Gluing & Cementing



### Dispenser for UV-Glue 110/220V

**Art.No.: 03080300000013**

Control Unit with foot switch

**Art.No.: 03080300000014**

Starter-Set with accessories for UV-Dispenser (transparent cartridges with different fluid reservoirs)

**Art.No.: 03080300000015**

Starter-Set with accessories for UV-Dispenser (black cartridges with different fluid reservoirs)



### UV-Light Source

**Art.No.: 541-80-0014**

High-Performance UV Light Source.

Light Spectra:

UVB 280 - 320nm 300 mW

UVA 320 - 400nm 1300 mW

VIS 400 - 500nm 1700 mW

Lamp: 200W (Lamp lifetime: approx. 1500 - 2000 h)

Power Supply: 110-240V (+/-10%) 50/60Hz, self adjusting

Dimensions: 340x310x160mm (WxDxH)

Stepper Motor - High-Performance Shutter: 0.2-999.9 Sec.

Including: Foot switch, Flexible light tube Ø 8x1500 mm x 1500mm



### Compact UV-Light Source

**Art.No.: 541-80-0060**

Light spectrum: UVA 370nm 1000 mW

Intensity: 2000mW/cm<sup>2</sup>

Power supply: 110-240V (+/-10%) 50/60Hz, self configuring. compliant with CE and EMI FCC Class B

Dimensions: 50x200x150mm (wxdxh)

Weight: 1,5 Kg

Accessories (inclusive):

- Foot Switch with cable and plug

- Adjustable-Hydraulic-Arm

## Gluing & Cementing

### UV-Safety Goggles

**Art.No.: 05660055665030**

UV-Safety Goggles conform to DIN EN 166 F.  
100% UV-Protection due to UV 400 material.  
Highest wearing comfort due to two component earpiece.



### Synthetic Resin Cement

**Art.No.: KK-17-3201**

Synthetic resin cement for blocking of lenses to spot blocks or similar applications. Also applicable to block lenses on runners, e.g. for aspheric production.  
Colour: Yellow



### Hot Air Gun

**Art.No.: 541-81-0002** (for small lenses)

Hot air gun for blocking of workpieces to exchangeable spindles or runners.

Small nozzle for small surfaces  
Includes adaption accessories for the AZP 2 HP



### Hot Air Gun 220V

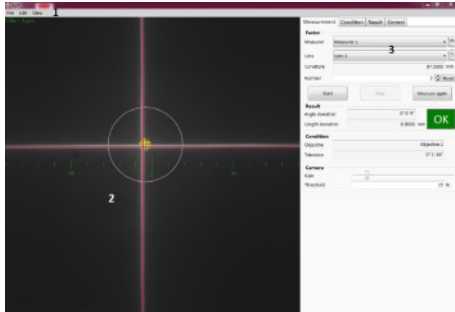
**Art.No.: 541-35-0002** (for large lenses)

Hot air gun for blocking of workpieces to exchangeable spindles or runners.

Power: 2200W  
Digital infinitely variable temperature 80 ° C-630 ° C  
Three-stage blower 150 - 500 l / min  
Including transport case



## Software



### Centering Error Software

**Art.No.: 541-86-0201**

Retrofitting centering error software for AZP 200 HP

Software options for automatic centering error detection of the basis machine:

- Automatic calculation of the centering error
- Tolerance threshold function with distinction GOOD / BAD
- Significant increase in measurement resolution (approx. 10x)

**Art.No.: 541-92-0015**

Conversion kit centering error software for older AZPs. Including AKF 300, digital camera and PC workstation.

## Conversion Kits & Consumables

### Motor for Lens Drive AZP 2 HP

The DC drive motors for our AZP 2 HP are available in various drive ratios:

<b>Art.No.: 541-35-0003</b>	<b><i>i = 9:1</i></b>
<b>Art.No.: 541-35-0004</b>	<b><i>i = 81:1</i></b>
<b>Art.No.: 541-35-0005</b>	<b><i>i = 189:1 (Standard)</i></b>
<b>Art.No.: 541-35-0006</b>	<b><i>i = 365:1</i></b>



### O-Ring for Lens Drive AZP 2 HP

**Art.No.: 08010100350200**

O-Ring 35 x 2 mm



### 8" LCD Monitor incl. Holder

**Art.No.: 501-99-0003**

8" LCD Monitor incl. Holder.  
BNC-Connection for analogue video signals  
Replacement for 9" CRT-displays





## Conversion Kits & Consumables

---



### **LED Cold Light Source incl. Adapter for AZP Systems**

**Art.No.: 02083001112030 + 541-80-068**

Energy and space saving cold light source for AZP Systems including adapter for direct installation onto the AKF.



### **Cold Light Bulb**

**Art.No.: 02080300000600**

Longlife Halogen Ellipsoid Cold Light Bulb 20 V / 150 Watt  
For auto collimator lighting

### **Lamp Module**

**Art.No.: 02083100000020**

Lamp module Lumatec 200 Watt DC for UV-light source

### **Liquid Fiber-Optic Light Guide**

**Art.No.: 02083108001500**

Liquid fiber-optic light guide for  
Lumatec Superlite SUV-DC-P Ø 8mm x 1500mm

### **Glass Fiber-Optic Light Guide**

**Art.No.: 541-92-0016**

Glass fiber-optic light guide 6 x 2000 mm for auto collimator lighting

## Conversion Kits & Consumables

---

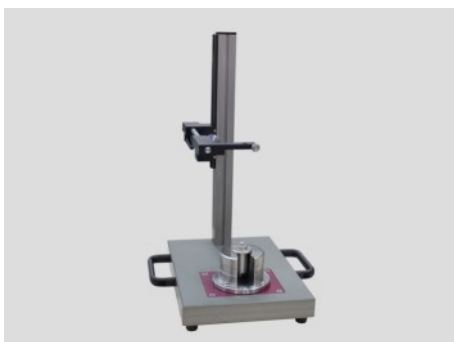
### LED-Magnifier-Lamp for OptoTech AZP systems

*Art.No.: 541-35-0007*

reduces operator fatigue, improves operator accuracy



## Stand-Alone-Units



### Test- and Blocking Station LC

**Art.No.: 540-90-0050**

**Basic Unit**

Combination of a height measurement system and a blocking station. Various modules available on option, so the station can be used for measuring the thickness (e.g. lenses or tools) or for blocking of lenses on precision runners.

The basic unit consists of:

1. Hard coated aluminium plate with transport handles
2. High precision, manual Z-drive with measuring arm for analogue gauge (included) for C/T measurement

max. travel Z-Axis:	220 mm
Travel measuring gauge:	100 mm
Scale resolution measuring gauge:	0.001 mm
Dimensions (WxDxH):	360 x 350 x 700 mm

Modules available on option:

<b>Art.No.: 540-90-0053</b>	<b>Module for thickness measurement HD 40</b>
<b>Art.No.: 540-90-0056</b>	<b>Module for measuring KombiTools HD 25</b>
<b>Art.No.: 540-90-0057</b>	<b>Module for thickness measurement HD 25</b>
<b>Art.No.: 540-90-0054</b>	<b>Module for centering and cementing</b>

Different chucks available on option:

<b>Art.No.: 540-90-0051</b>	<b>HD 40 Chucks</b>
<b>Art.No.: 540-90-0052</b>	<b>HD 25 Chucks</b>
<b>Art.No.: 540-90-0055</b>	<b>HD 12 Chucks</b>

Hot air guns on option (See page 6):

<b>Art.No.: 541-81-0002</b>	<b>(for small surfaces)</b>
<b>Art.No.: 541-35-0002</b>	<b>(for bigger surfaces)</b>

## Stand-Alone-Units

### Blocking Unit LC

**Art.No.: 540-90-0016**     *Basic Unit*

For high precision blocking of lenses in asphere production and lens production with integrated edging.

Including stand and Millimess measuring gauge.

Range of application:

Serial cementing (with V-edge) up to  $\varnothing$  200 mm

Single cementing up to  $\varnothing$  250 mm

Working principle: The lens will be layed down on the holder, adjusted according to the measuring gauge. In the next step the lens holder will be heated and blocked by a seperate heating source.

V-Edges on option:

**Art.No.: 540-12-044**     *10 mm <  $\varnothing$  < 60 mm*

**Art.No.: 540-12-045**     *60 mm <  $\varnothing$  < 130 mm*

**Art.No.: 540-12-046**     *130 mm <  $\varnothing$  < 200 mm*

Centering spindles on option:

**Art.No.: 540-45-0007**     *Centering Spindle with HD 40*

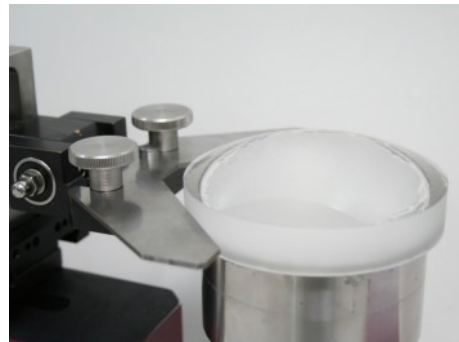
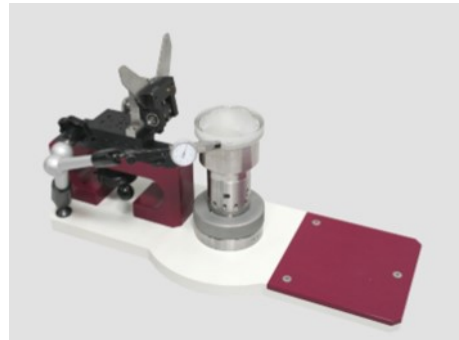
**Art.No.: 540-45-0009**     *Centering Spindle with HD 25*

**Art.No.: 540-45-0011**     *Centering Spindle with HD 12*

Hot air guns on option (See page 6):

**Art.No.: 541-81-0002**     *(for small surfaces)*

**Art.No.: 541-35-0002**     *(for bigger surfaces)*



## Center Thickness Measuring Unit

Center Thickness Measuring Unit for lenses up to diameter 200 mm

Measuring gauge with 0.01mm scale

Max. measuring stroke 30mm

Measuring gauge height setting by a precision gear rack

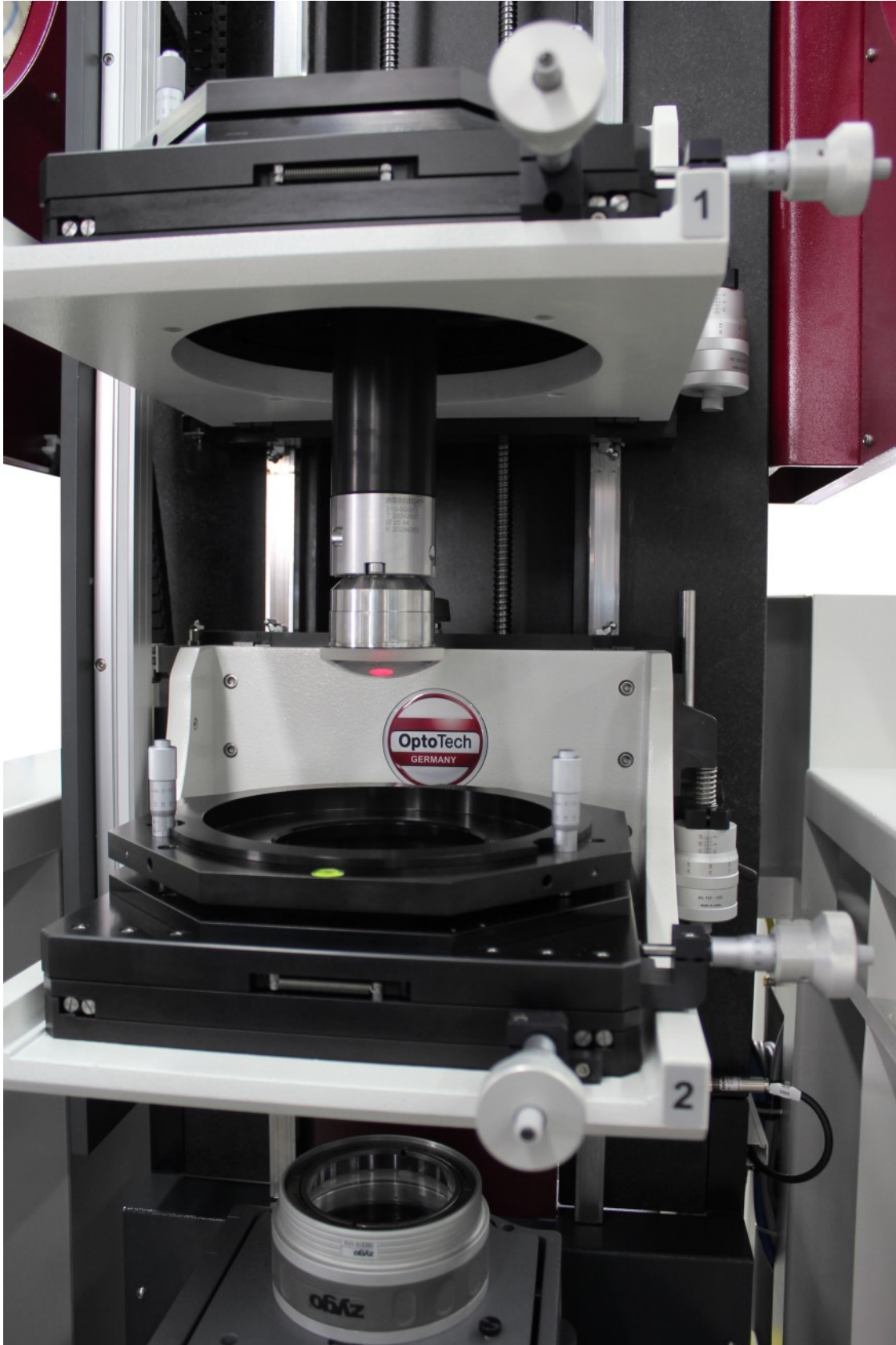
Exchangeable lens holders

**Art.No.: 605-80-0002**





## Equipment for Interferometers



Metrology: Equipment for Interferometers



## Reference Spheres

### 1/2" Reference Spheres

We offer various Zeiss F-Aplanar 1/2" reference spheres with an standard accuracy of  $\lambda/10$ .

$\lambda/20$  available on request



Description	Art.No.	Front Radii	F#	Accuracy
F-Aplanar 1/2"	11200022020000	Plano	-	$\lambda/10$
F-Aplanar 1/2"	11200022020060	-4.0 mm	0.59	$\lambda/10$
F-Aplanar 1/2"	11200022020100	-13.6 mm	1.0	$\lambda/10$

### 60mm Reference Spheres

We offer different types of OptoTech 60mm reference spheres incl. hardcase.

Standard accuracy:  $\lambda/20$ .



Description	Art.No.	Front Radii	F#	Accuracy
Reference Sphere 60mm	11200027060061	-17mm	0.6	$\lambda/20$
Reference Sphere 60mm	11200027060071	-23 mm	0.7	$\lambda/20$
Reference Sphere 60mm	11200027050101	-43 mm	1.0	$\lambda/20$
Reference Sphere 60mm	11200027060141	-65 mm	1.4	$\lambda/20$
Reference Sphere 60mm	11200027060201	-105 mm	2.0	$\lambda/20$
Reference Sphere 60mm	11200027060281	-150 mm	2.8	$\lambda/20$

## Reference Spheres

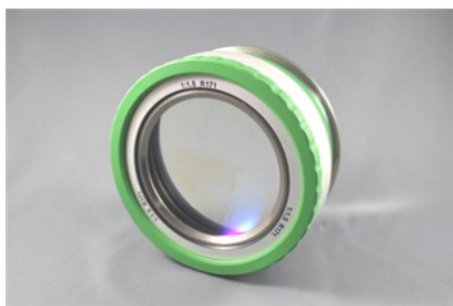


### 4" Reference Spheres

We offer various 4" reference spheres of the type Zygo TF and Zygo TS with a standard accuracy of  $\lambda/20$  resp.  $\lambda/10$ .

Description	Art.No.	Front Radii	F#	Accuracy
Zygo TF 4"	11200023100001	Plano	-	$\lambda/20$
Zygo TS 4"	11200023100071	-38.7 mm	0.65	$\lambda/20$
Zygo TS 4"	11200023100081	-48.2 mm	0.75	$\lambda/20$
Zygo TS 4" HR-C	11200023100082	-48.2 mm	0.75	$\lambda/10$
Zygo TS 4"	11200023100151	-121.2 mm	1.50	$\lambda/20$
Zygo TS 4" HR-C	11200023100152	-121.2 mm	1.50	$\lambda/10$
Zygo TS 4"	11200023100331	-298.0 mm	3.33	$\lambda/20$
Zygo TS 4" HR-C	11200023100332	-298.0 mm	3.33	$\lambda/10$
Zygo TS 4"	11200023100711	-681.70mm	7.10	$\lambda/20$
Zygo TS 4" HR-C	11200023100712	-681.7 mm	7.10	$\lambda/10$
Zygo TS 4"	11200023101071	-1039.2 mm	10.7	$\lambda/20$
Zygo TS 4" HR-C	11200023101072	-1039.2 mm	10.7	$\lambda/10$

Other Zygo reference spheres with higher accuracy available on request



### 5" Reference Spheres

We offer various OptoTech 5" reference spheres with a standard accuracy of  $\lambda/15$ .

Description	Srt. No.	Front Radii	F#	Accuracy
Reference Sphere 5"	11200025120073	-44 mm	0.65	$\lambda/15$
Reference Sphere 5"	11200025120103	-90 mm	0.95	$\lambda/15$
Reference Sphere 5"	11200025120153	-171 mm	1.50	$\lambda/15$
Reference Sphere 5"	11200025120333	-422 mm	3.33	$\lambda/15$
Reference Sphere 5"	11200025120713	-958 mm	7.10	$\lambda/15$
Expander 4" to 5"	11200025120015			

## Reference Spheres

### 6" Reference Spheres

We offer various 6" Zygo reference spheres with a standard accuracy of  $\lambda/20$  resp.  $\lambda/10$ .



Description	Art.No.	Front Radii	F#	Accuracy
Zygo TF 6"	11200023150001	Plano	-	$\lambda/20$
Zygo TS 6"	11200023150080	-80.0 mm	0.8	$\lambda/10$
Zygo TS 6"	11200023150081	-80.0 mm	0.8	$\lambda/20$
Zygo TS 6"	11200023150110	-123.3 mm	1.1	$\lambda/10$
Zygo TS 6"	11200023150111	-123.3 mm	1.1	$\lambda/20$
Zygo TS 6"	11200023150220	-290.0 mm	2.2	$\lambda/10$
Zygo TS 6"	11200023150221	-290.0 mm	2.2	$\lambda/20$
Zygo TS 6"	11200023150350	-475.8 mm	3.5	$\lambda/10$
Zygo TS 6"	11200023150351	-475.8 mm	3.5	$\lambda/20$
Zygo TS 6"	11200023150540	-776.4 mm	5.4	$\lambda/10$
Zygo TS 6"	11200023150541	-776.4 mm	5.4	$\lambda/20$
Zygo TS 6"	11200023150720	-1045.0 mm	7.2	$\lambda/10$
Zygo TS 6"	11200023150721	-1045.0 mm	7.2	$\lambda/20$

## Converters & Co.



### Converter, Converger and Diverger

We offer various converters, convergers and divergers made by Zeiss or Zygo.

#### Converter

Description	Art.No.	Inlet	Outlet	Design
F-Aplanar AC 1"-4"	11200022100000	1"	4"	vertikal
Zygo AC 4"-6"	11200023150000	4"	6"	vertikal
Zygo AC 4"-6"	O500-80-031	4"	6"	horizontal

#### Converger und Diverger

Description	Art.No.	Front Radii	F#	Accuracy
Zygo Converger	11200023101501	-1500	15.0	$\lambda/10$
Zygo Diverger	11200023101502	1500	15.0	$\lambda/10$
Zygo Converger	11200023102501	-2500	25.0	$\lambda/10$
Zygo Diverger	11200023102502	2500	25.0	$\lambda/10$
Zygo Converger	11200023103501	-3500	35.0	$\lambda/10$
Zygo Diverger	11200023103502	3500	35.0	$\lambda/10$
Zygo Converger	11200023104501	-4500	45.0	$\lambda/10$
Zygo Diverger	11200023104502	4500	45.0	$\lambda/10$
Zygo Converger	11200023108001	-8000	80.0	$\lambda/10$
Zygo Diverger	11200023108002	8000	80.0	$\lambda/10$

## Adapters

### Reference Sphere Adapters

**Art.No.: 500-90-093**

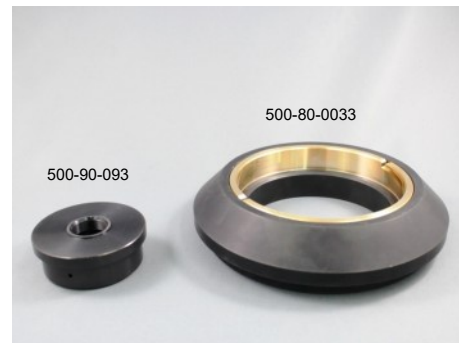
Adapter 2" measuring beam to 1/2" reference spheres

**Art.No.: 500-80-0129**

Adapter 4" measuring beam to 6" reference spheres

**Art.No.: 500-80-0033**

Adapter 6" measuring beam to 4" reference spheres



## Extension Tubes

### Reference Sphere Extensions

**Art.No.: 505-35-0001**

**2" Extension  
(Extension 60 mm)**

Extension tube with Zygo bayonet connections for a higher mounting of a 4" Fizeau reference sphere.

Total height 80 mm; effective extension 60 mm

**Art.No.: 514-90-0002**

**4" Extension  
(Extension 62 mm)**

Extension tube with Zygo bayonet connections for a higher mounting of a 4" Fizeau reference sphere.

Total height 82 mm; effective extension 62 mm

**Art.No.: 515-80-0015**

**4" Extension  
(Extension 186 mm)**

Extension tube with Zygo bayonet connections for a higher mounting of a 4" Fizeau reference sphere.

Useful for close mounting of computer generated holograms (asphere measurement) next to the reference sphere.

Total height 206 mm; effective extension 186 mm

**Art.No.: 515-80-0006**

**6" Extension  
(Extension 186 mm)**

Extension tube with Zygo bayonet connections for a higher mounting of a 6" Fizeau reference sphere.





## Absorber Foils

---



### Absorber Foils for Highly Reflective Optics (Horizontal oriented)

*Art.No.: 11200023001000 Absorber foil 4" incl. holder*

*Art.No.: 11200023001500 Absorber foil 6" incl. holder*

For a better measurability of highly reflective surfaces.

For best possible contrast of the fringes.



### Spacer 4" for Absorber Foil

*Art.No.: 514-95-001*

Spacer to fit the 4" absorber foil to 4" Zigo Fizeau reference spheres on vertically oriented OptoTech Interferometers. Has to be combined with absorber foil Art.No. 11200023001000.

## Reference Optics

### Plano and Spherical Reference Optics

We deliver various plano and spherical reference optics made by Zygo for measuring beam reflection in transmission of optical components.

Including transportation case



Description	Art.No.	Aperture	Reflection	Accuracy
Zygo RF 4"	20100013100000	Plano	4%	$\lambda/20$
Zygo RF 4"	20100013100001	Plano	90%	$\lambda/20$
Zygo RF 6"	20100013150000	Plano	4%	$\lambda/20$
Zygo RF 6"	20100013150001	Plano	90%	$\lambda/20$
Zygo RS	20100013025050	25 mm	4%	$\lambda/10$
Zygo RS	20100013025051	25 mm	40%	$\lambda/10$
Zygo RS	20100013037070	37 mm	4%	$\lambda/20$
Zygo RS	20100013037071	37 mm	40%	$\lambda/20$

## Lens Adapters for Vertical Interferometers



### Set of Adapters

We offer 5 different sets of adapters for our OptoTech interferometers.

Including case.

Art.-No.	Diameter	Range	Increments	Suitable for
500-35-0003 500-35-0013	Convex Concave	2 mm to 8 mm	0.1 mm Steps Ø2.0 to 4.0 mm 0.2 mm Steps Ø4.0 to 8.0 mm	OWI 12.5 Micro, OWI Compact 1/2" and 2", OWI 50 HP
500-35-0004 500-35-0014	Convex Concave	8,5 mm to 20 mm	0.5 mm Steps	OWI Compact 1/2" and 2", OWI 50 HP
500-35-0005 500-35-0015	Convex Concave	20 mm to 40 mm	1 mm Steps Ø20 to 30 mm 2 mm Seps Ø32 to 40 mm	OWI 4" LC, OWI 100 ECO (L), OWI 150 XT
500-35-0006 500-35-0016	Convex Concave	42 mm to 60 mm	2 mm Steps	OWI 4" LC, OWI 100 ECO (L), OWI 150 XT
500-35-0007 500-35-0017	Convex Concave	62 mm to 80 mm	2 mm Steps	OWI 4" LC, OWI 100 ECO (L), OWI 150 XT
500-35-0008 500-35-0018	Convex Concave	85 mm to 200 mm	5 mm Steps	OWI 150 XT

## Lens Adapters for Vertical Interferometers

### Lens Adapters

**Art.No.: 500-90-3xx**

*Various Lens Adapters  
for Rod Lenses  
( $\varnothing$  0.5 to 6.0 mm)*

**Art.No.: 500-90-4xx**

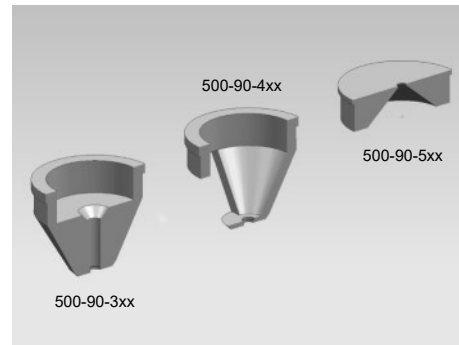
*Various Lens Adapters  
for Micro-Lenses cx and cc  
( $\varnothing$  0.5 to 6.0 mm)*

**Art.No.: 500-90-5xx**

*Various Lens Adapters  
for cx- and cc-Lenses  
 $\varnothing \leq 80$  mm ( $\varnothing$  2 to 80 mm)*

**Art.No.: 500-90-6xx**

*Various Lens Adapters  
for cx- and cc-Lenses  
 $\varnothing > 80$  mm ( $\varnothing$  82 to 100 mm)*



### Baffle Rings for Lens Adapters

Art.-No.	Outside-Diameter Baffle Ring	Inside-Diameter Baffle Ring
500-90-095	120mm	85mm
500-90-060	120mm	68mm
500-90-094	120mm	30mm
500-90-100	100mm	85mm
500-90-099	100mm	68mm
500-90-096	85mm	56mm
500-90-071	85mm	50mm
500-90-020	68mm	56mm
500-90-016	68mm	50mm
500-90-031	68mm	25mm
500-90-019	50mm	36mm
500-90-018	50mm	30mm
500-90-017	50mm	25mm
501-90-032	30mm	25mm
500-90-065	Arm for ball bearing	



## Lens Adapters for Vertical Interferometers



### Adjustable Lens Holders

Adjustable lens holder for various lens diameters.

Version with three independently adjustable support arms; thus also suitable for measuring of rectangular shapes (e.g. prisms).

For vertical interferometers only.



Art.No.	Suitable for	Diameter	Flange Diameter
505-90-0004	2"	< 50 mm	68 mm
514-90-0001	4"	< 100 mm	120 mm
515-90-0100	4"	30 mm to 90mm	120 mm
515-90-0002	4"	< 100 mm	120 mm
515-90-0102	4"	30 mm to 110 mm	120 mm
515-90-0101	6"	90 mm to 150 mm	120 mm
515-90-0004	6"	5mm bis 150mm	200 mm

### Adjustable Lens Holder 6"

**Art.No.: 515-90-0004**

Adjustable lens holder for various lens diameters from 5 to 150 mm.

For OptoTech vertical Interferometers with 6" X/Y-Table, e.g. OWI 150 XT.

## Lens Adapters for Vertical Interferometers

Also available:

**Art.No.: 500-90-097**

**Measuring Arm  $\varnothing$  50 mm (4")**



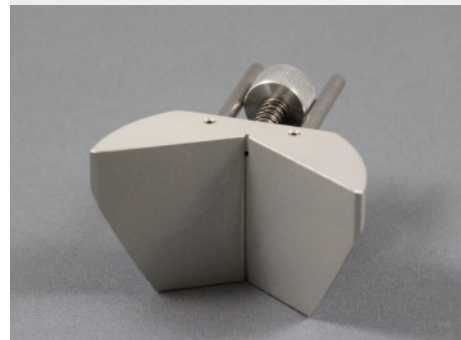
**Art.No.: 501-90-021**

**Measuring arm (short) for OWI Compact 1/2" and 2"**



**Art.No.: 501-90-0005**

**Adjustable Prism for Multi Block on OWI Compact**



## Lens Adapters for Horizontal Interferometers

### Lens Holder

Adjustable 3 point lens holder in 2 versions:

**Art.No.: 20090010010010**

**5 mm <  $\varnothing$  < 100 mm  
4" Zygo Bajonett  
connection**

**Art.No.: 20090010010020**

**5 mm <  $\varnothing$  < 200 mm  
6" Zygo Bajonett  
connection**





## CGH Holder

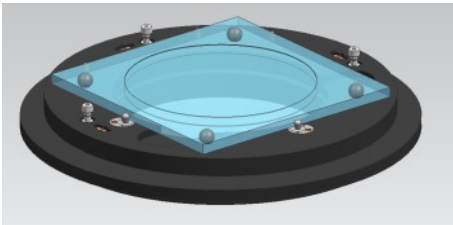
---



### Horizontal Holder (OWI 150 ASPH)

**Art.No.: 517-15-0002**

3 Axis Positioning Unit for OWI 150 ASPH Interferometer for mounting Jenoptik Computer Generated Holograms. Z-Axis and Tilt with fine test ball guiding. Holding of diffractive element by magnet. Easy attachment and detachment of CGH.



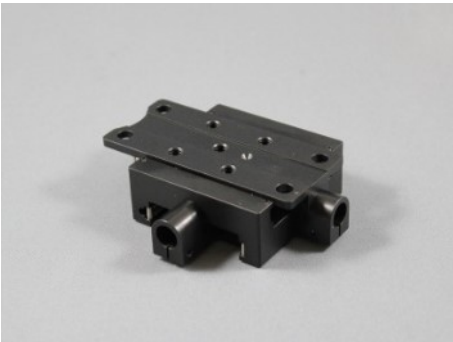
### Vertical Holder (OWI 150 XT)

**Art.No.: 515-15-0020**

Extension unit for OWI 150 XT to accept CGH (Computer Generated Hologram) of Jenoptik or Diffraction International

## Lens Positioning

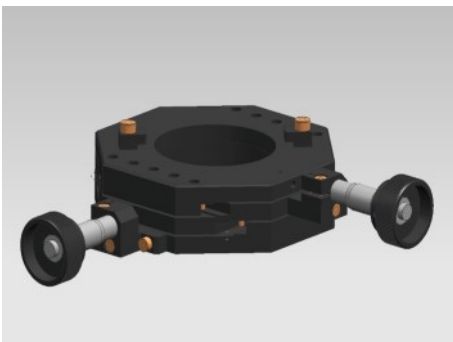
---



### X/Y Table 1/2" HP

**Art.No.: 11200030000010**

X/Y table for lens positioning on OWI 12.5 Micro and OWI Compact (1/2" & 2"). Including cross roller guides and precision screws



### X/Y Table 2" HP

**Art.No.: 11200030000050**

X/Y table for lens positioning on OWI 50 HP. Including cross roller guides and precision screws  
Free diameter 68mm  
Designed for reception of OptoTech lens holder

## Lens Positioning

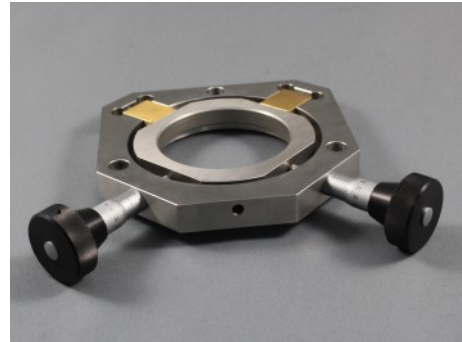
### X/Y Table 2" LC for OWI Compact 1/2" inverse and OWI 50 HP

**Art.No.: 505-15-0001**

X/Y table with slide bearings for 2" Interferometers (e.g. OWI Compact 1/2" Inverse, OWI 50 HP, etc.)

Travel X/Y table: +/- 2.5 mm

Adjustment via micrometer screws:  
Acclivity 0.5 mm/rotation.



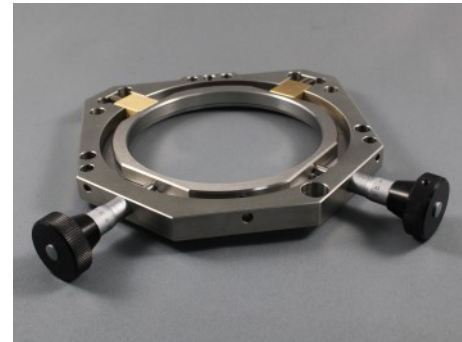
### X/Y Table 4" LC for OWI 4" LC and OWI 100 ECO

**Art.No.: 514-99-0001**

X/Y table with slide bearings for 4" Interferometers (e.g. OWI 4" LC, OWI 100 ECO, etc.)

Travel X/Y table: +/- 7 mm

Adjustment via micrometer screws:  
Acclivity 0.5 mm/rotation.



### X/Y Table 6" HP

**Art.No.: 11200030000060**

X/Y-table for lens positioning on OWI 100 ECO, 150 HP, OWI 150 XT.

Including micro-gauges for X- and Y-Axis

Free diameter 220 mm

Designed for reception of OptoTech lens holder



### 3 Jaw Chucks

3 jaw chucks for inverse interferometers. Flexible test reception incl. insert for measuring table.

**Art.No.: 514-90-0007**

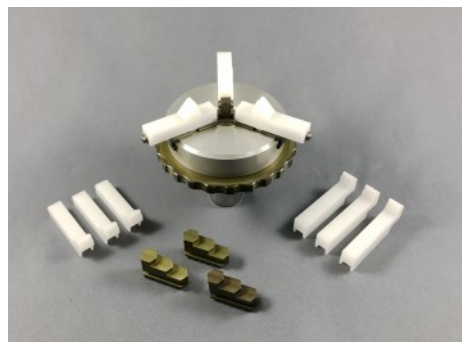
**Flange 120mm with Top Jaws**  
(Clamping range Ø10mm to 100mm)

**Art.No.: 515-90-0200**

**HD 25 with Top Jaws**  
(Clamping range Ø10mm to 100mm)

**Art.No.: 515-90-0200**

**HD 25 without Top Jaws**



## Lens Positioning

---



### **Clamping Chuck for Pins on the OWI 12.5 Micro**

*Art.No.: 502-90-0001*

3-Point-Chuck with pull-spring clamp on the OWI 12.5 Micro for Pin Polishing Production



### **Multiple block swiveling unit with Three Jaw Chuck**

*Art.No.: 505-15-0007*

Swiveling unit for the support of multiple blocks (and single lenses) on OptoTech OWI 50 HP Invers



### **Swiveling Unit for OWI 50 HP Inverse and OWI 1/2 inch Compact Inverse**

*Art.No.: 505-15-0011*

Scope of delivery without displayed cross-table



### **Swiveling Unit for OWI 100 Eco Inverse**

*Art.No.: 514-15-0003*

## Software

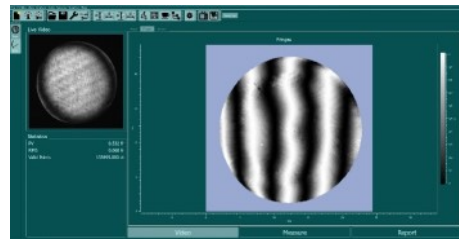
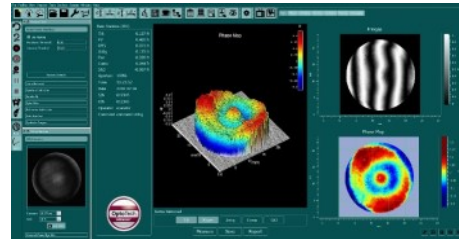
### Phase Shifting Interferometer Software REVEAL

*Art.No.: 514-86-0003 (for 4 Inch devices)*  
*Art.No.: 505-86-0003 (for 2 Inch devices)*

*On request also available for 1/2 Inch devices*

Phase Shifting Evaluation Software for Interferometer.

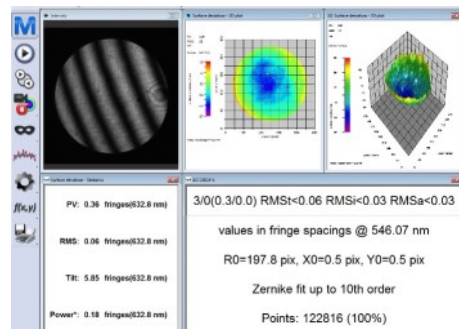
Features (examples):  
 Surface evaluation compliant with DIN-ISO 10110.  
 Easy to use radius calculation mode.  
 Extensive, free configurable documentation feature.  
 Result transparency due to traceable evaluation structure.  
 Substantial Supervisormodus (pic above) and easy to use Production mode (pic in the middle), specifically stripped down to the needs of workshop floors.



### Phase Shifting Fringe Analysis Software μShape OWI

*Art.No.: 514-86-0001 (for 4 Inch Devices)*  
*Art.No.: 505-86-0001 (for 2 Inch and 60mm Devices)*  
*Art.No.: 502-86-0001 (for 1/2 Inch Devices)*

Also available as Static Fringe Analysis Software without Phase Shifter.



## Plano Measurements



### Retrofitting Set Tilting Table 68 mm (2“)

**Art.No.: 505-15-0008**

Retrofitting set tilting table 68 mm for OWI 50 HP with 2 additional degrees of freedom for testing plano surfaces.

Can be adapted to OWI X/Y tables 68 mm for plano measurements with 5 degrees of freedom.

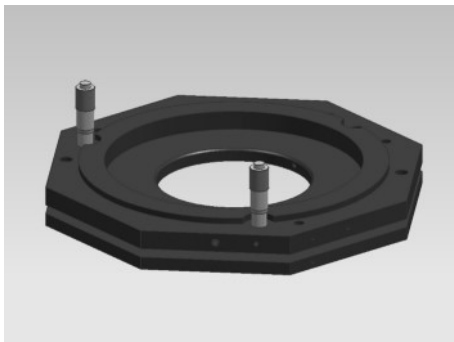
Wobbling of the upper plate adjustable via 2 measuring screws.

Lens holder separately available.

Also available:

### Retrofitting Set Tilting Table 120 mm (4“)

**Art.No.: 514-15-0002**



### Tilting Table 220 mm (6“)

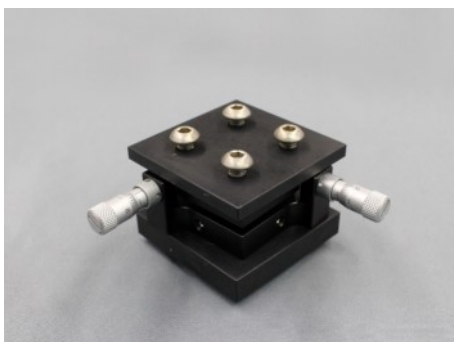
**Art.No.: 500-15-0015**

Tilting table 220 mm for OptoTech Interferometers with 2 additional degrees of freedom for testing plano surfaces.

Can be adapted to OWI X/Y tables 220 mm for plano measurements with 5 degrees of freedom.

Wobbling of the upper plate adjustable via 2 measuring screws.

Lens holder separately available.



### Tilting Table for OWI Compact

**Art.No.: 501-15-0004**

2 axis tilting table.

Suitable for OWI Compact 1/2" and 2".

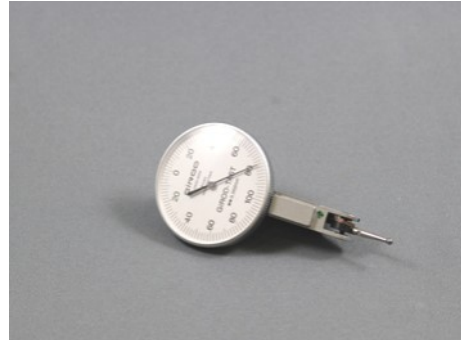
Allows the adjustment of plano surfaces.



## Measuring Gauges and Pins

### Dial Indicator

OptoTech offers 3 different dial indicators. All indicators have a body diameter of 40 mm, a measuring pin length of 14.5 mm and a clamping shaft  $\varnothing$  8h6.



Description	Art.No.	Measuring Range	Force
Lever dial indicator - 0,01 mm	11010200340010	+/- 0.25 mm	0.1 N
Lever dial indicator - 0,002 mm	11010200345010	+/- 0.1 mm	0.15 N
Lever dial indicator - 0,001 mm	11010204364220	+/- 0.07 mm	0.2 N

**Art.No.: 11010200010401**      *Replacement pin for lever dial indicators*

### Digital Dial Indicator

**Art.No.: 11010101420010**

Digital lever dial indicator Mahr Millimes 2001

Stroke: 1.8 mm

Classification: Variable

Measuring Range: +/-0.9 mm

Variable Scale Classification: 1 $\mu$ m/0.5 $\mu$ m/0.2 $\mu$ m

Splashproof body



## Measuring Gauges and Pins



### Mechanical Precision Gauge

Splashproof Mahr Millimes precision gauge available in two different versions:

**Art.No.: 11010100001002**      Measuring Range: +/-25µm  
Scale Classification: 0.5µm

**Art.No.: 11010100001003**      Measuring Range: +/-50µm  
Scale Classification: 1µm

### Mechanical and digital measuring gauges

We offer mechanical as well as digital measuring gauges for various measuring ranges:

Description	Art.No.	Measuring Range	Scale Diameter	Scale
Mechanical Gauge MU 52/30T	11010100300010	30 mm	52 mm	0.01 mm
Mechanical Gauge MU 58/30	11010100300012	30 mm	58 mm	0.01 mm
Mechanical Gauge MU 52/50T	11010100500010	50 mm	52 mm	0.01 mm
Mechanical Gauge MU 52/80T	11010100800010	80 mm	52 mm	0.01 mm
Mechanical Gauge MU 52/80T counter-clockwise scale	11010100800011	80 mm	52 mm	0.01 mm

Description	Art.No.	Measuring Range	Scale Classification	Accuracy
Digital Gauge Stroke 25 mm	11010100000025	25 mm	1µm	±5 µm
Digital Gauge Stroke 50 mm	11010100000050	50 mm	1µm	±5 µm
Digital Gauge Stroke 100 mm	11010100000100	100 mm	1µm	±5 µm

## Measuring Gauges and Pins

### Precision Measuring Pin incl. Display

Available in 2 versions:

**Art.No.: O501-80-0011**

**Precision Measuring Pin Stroke 12 mm**

Scale classification: 0.1  $\mu\text{m}$

Accuracy: 0.2  $\mu\text{m}$  (System accuracy of the measuring pin)

Delivery includes measuring pin Type MT 12 and measuring display ND280



**Art.No.: O501-80-0008**

**Precision Measuring Pin Stroke 25 mm**

Scale classification: 0.1  $\mu\text{m}$

Accuracy: 0.2  $\mu\text{m}$  (System accuracy of the measuring pin)

Delivery includes measuring pin Type MT 12 and measuring display ND280

### Set of Measuring Pin Extensions

**Art.No.: 751-80-0001**

Set of measuring pin extensions for spherometer measuring rings and interferometers, consisting of the following extensions:

10 mm; 15 mm; 20 mm; 30 mm; 60 mm; 100 mm



### Measuring Stand for Tools and Cementing Pins with HD 25

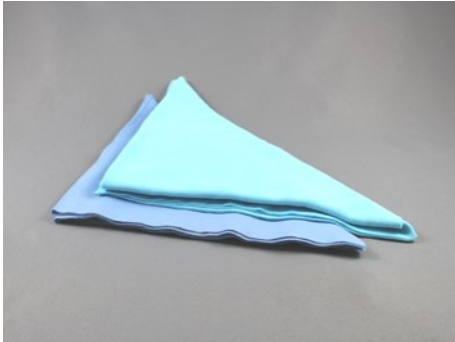
**Art.No.: 185-80-0002**

Measuring System for height measurement of tools and cemented lenses with HD 25 chuck incl. Measuring gauge (stroke 100 mm).

Working Range Diameter: up to 300 mm



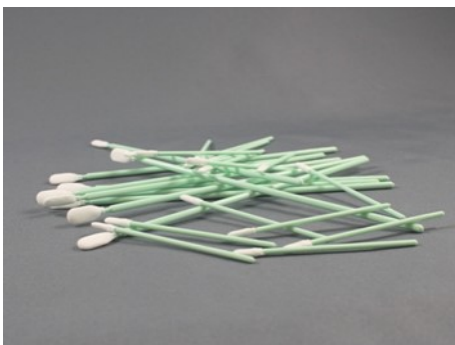
## Cleaning Equipment



### Cleaning Cloths

We offer various soft and free from fuzz cleaning cloths that are especially suitable to clean sensitive optical surfaces.

- |                            |   |
|----------------------------|---|
| <b>Art.No.: RM-19-3301</b> | <b>Cotton Cleaning Cloth<br/>60 x 40 cm white</b>         |
| <b>Art.No.: RM-21-3301</b> | <b>Cotton Cleaning Cloth<br/>low silicone blue</b>        |
| <b>Art.No.: RM-21-3303</b> | <b>Cotton Cleaning Cloth<br/>free from silicone white</b> |
| <b>Art.No.: RM-83-3301</b> | <b>Cleaning Cloth TX 609<br/>23 x 23 cm white</b>         |
| <b>Art.No.: RM-83-3302</b> | <b>Cleaning Cloth TX 409<br/>23 x 23 cm white</b>         |



### Swab

- |                            |              |
|----------------------------|--------------|
| <b>Art.No.: RM-83-3303</b> | <b>Long</b>  |
| <b>Art.No.: RM-83-3304</b> | <b>Short</b> |

Polyester swab for cleaning broad surfaces and hard to reach areas

- Available in 2 sizes:
- Long: 16.8 cm, TX 761, 100 Pcs.
  - Short: 10 cm, TX 758, 100 Pcs.

## Cleaning Equipment

### Air Pressure Spray

**Art.No.: 1006200550000**

Air pressure spray can be used universally for fast and reliable removal of dust and fuzz from optical components like lenses, mirrors and reference spheres.

Unit: 400ml can



### Aceton

**Art.No.: RM-42-0001**

Chemically pure Aceton.

Unit: 30litre canister

### Methanol

**Art.No.: RM-42-00012**

Unit: 21litre canister

### Dust Protection Cover „Dust Protector“

**Art.No.: 501-53-002**

Universal protection cover for OptoTech measuring machines OWI Compact, OWI 50 HP und AZP HP



## Measuring Stand

---



### Adjustable Hydraulic Arm for Dial Indicator without Stand

2 versions available:

**Art.No.: 11010100803100**      *short arm*

Adjustable hydraulic arm without stand (length: 260 mm)

Connection Thread: M 8

Arm length: 260 mm

Adhesive Force: 800 N

**Art.No.: 11010100803101**      *long arm*

Adjustable hydraulic arm without stand (length: 400 mm)

Connection Thread: M 10

Arm length: 400 mm

Adhesive force: 1000 N

### Adjustable Hydraulic Arm for Dial Indicator with Stand

2 versions available:

**Art.No.: 11010105010005**      *short arm*

Adjustable hydraulic arm with central clamping and magnetic base (length: 300 mm)

**Art.No.: 11010105015500**      *long arm*

Adjustable hydraulic arm with central clamping and magnetic base (length: 550 mm)

## Caliper / Fine Measuring Table

### Digital Caliper with Data Outlet

*Art.No.: 11010100412640*

Digital caliper with data outlet



### Digital Caliper without Data Outlet

*Art.No.: 11010100412641*

Digital caliper without data outlet

### Fine Measuring Table

*Art.No.: 11010010010050*

For checking flatness and parallelism of horizontal surfaces of small samples.

Height: 400 mm.







# OptoTech

Contact

## Contact:



**OptoTech Optikmaschinen GmbH**  
Sandusweg 2 - 4  
35435 Wettenberg  
Germany  
T: +49 641 98 20 3-0  
E: [info@optotech.de](mailto:info@optotech.de)  
W: [www.optotech.de](http://www.optotech.de)



**OptoTech S.r.l.**  
Via Indipendenza  
20014 Sant'Ilario Milanese  
Italy  
T: +39 03 31 53 30 00  
E: [info@optotech.it](mailto:info@optotech.it)



**OptoTech AG**  
Dorfstraße 37  
4512 Bellach  
Switzerland  
T: +41 32 613 38 00  
E: [info@optotech.ch](mailto:info@optotech.ch)



**OptoTech Asia Ltd.**  
Room 22, 23/F, Metro Centre II  
21 Lam Hing Street, Kowloon Bay  
Hongkong  
T: +852 3568 3243  
E: [office@optotechhk.com](mailto:office@optotechhk.com)



**OptoTech Optical Machinery Inc.**  
PO Box 7  
Palm, PA 18070  
USA  
T: +1 215 6792091  
E: [info@optotech.us](mailto:info@optotech.us)



**OptoTech Optikmaschinen GmbH**  
Damji Shamji Trade Centre 505  
5th Floor, Station Road  
Vidyavihar – W  
Mumbai – 400 086  
India  
T: +91 22 66 71 03 93  
E: [india@optotech.de](mailto:india@optotech.de)



# OptoTech

2023-11-14; Subject to change